



Conservation options for private landowners

Caroline Gagné

Director – Western Quebec

May 7, 2023



CONSERVATION
DE LA NATURE
CANADA

NCC DELIVERS RESULTS



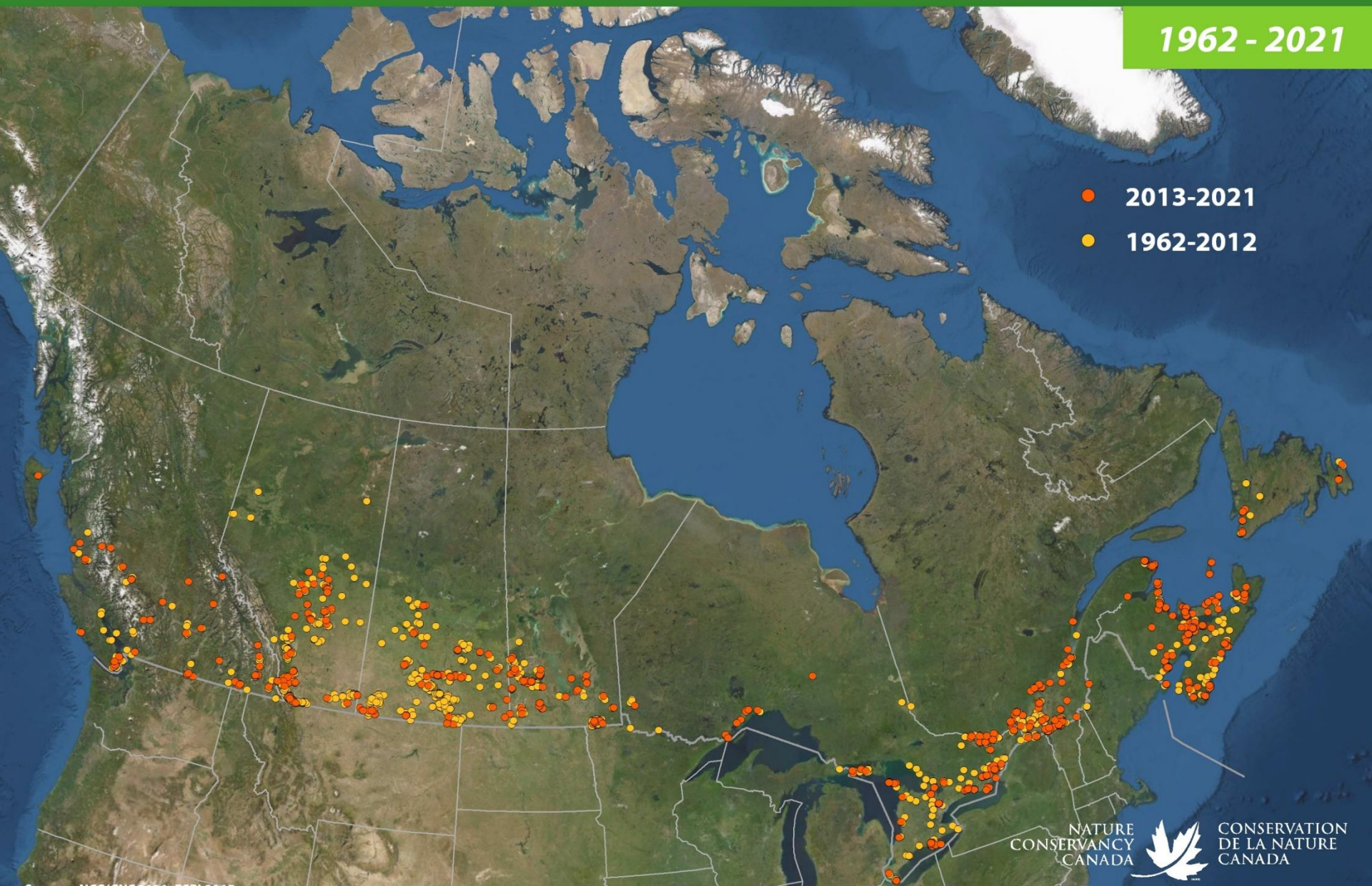
The Nature Conservancy of Canada is the largest conservation organization in Canada since its creation in 1962

- NCC is the country's unifying force for nature, working to deliver large-scale, permanent land conservation
- NCC obtains its gains thanks to a network of individual and corporate partners who are inspired by its mission
- Over **15 millions hectares** is conserved in Canada
- Efficient and effective : **79 % of funds raised** are directed towards land conservation work



LANDS CONSERVED BY THE NATURE CONSERVANCY OF CANADA

TERRES CONSERVÉES PAR CONSERVATION DE LA NATURE CANADA



NATURAL SITES PROTECTED BY NCC IN QUEBEC

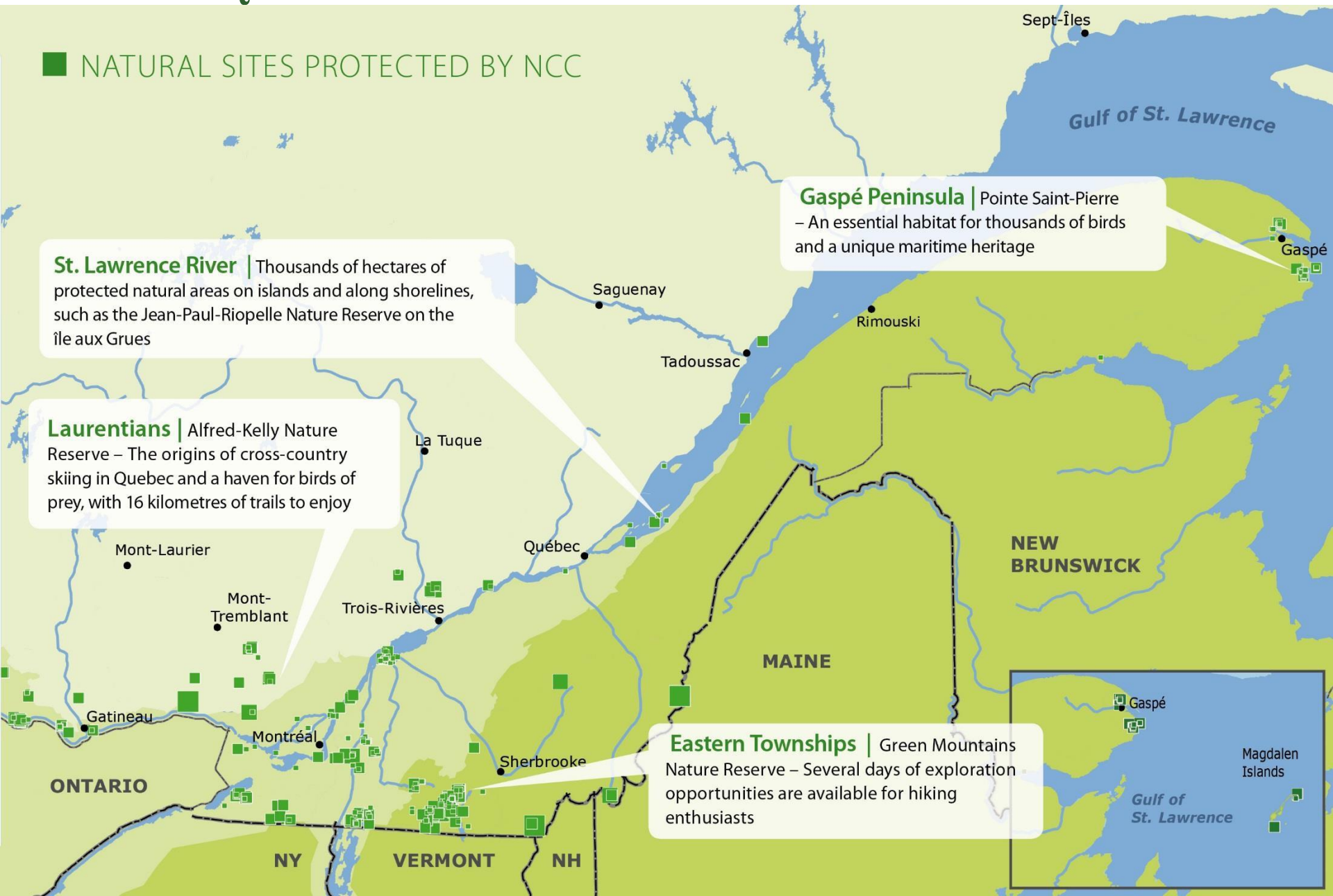
■ NATURAL SITES PROTECTED BY NCC

St. Lawrence River | Thousands of hectares of protected natural areas on islands and along shorelines, such as the Jean-Paul-Riopelle Nature Reserve on the île aux Grues

Laurentians | Alfred-Kelly Nature Reserve – The origins of cross-country skiing in Quebec and a haven for birds of prey, with 16 kilometres of trails to enjoy

Gaspé Peninsula | Pointe Saint-Pierre – An essential habitat for thousands of birds and a unique maritime heritage

Eastern Townships | Green Mountains Nature Reserve – Several days of exploration opportunities are available for hiking enthusiasts



NCC IN QUEBEC



Close to 500 km² protected

The equivalent of the island of **Montreal**

NCC protects an area similar to **132** hockey rinks **per week**



Habitat for 200 species at risk



9 Quebecois out of 10 live near a protected site



More than 65 protected areas, including 15 accessible to the public



A « fleuve », the St. Lawrence, representing one of the most important rivers in the world, draining 20% of all fresh water on the planet





OUT PROTECTION INITIATIVES IN THE OUTAOUAIS REGION





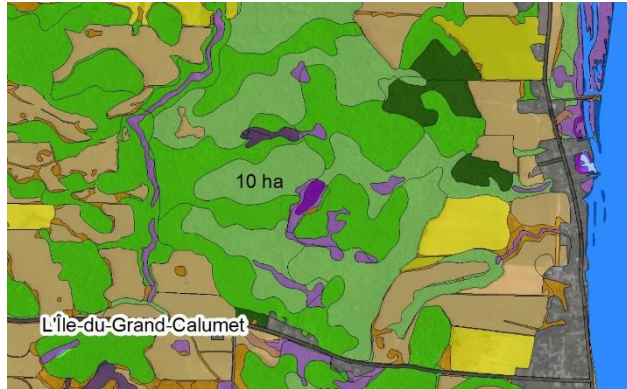
PRIORITIES FOR THE OUTAOUAIS REGION

- **Accelerate conservation** to contribute to the 30% target for protected areas
- **Protect unique ecosystems** and species at risk habitats
- **Integrate nature-based solutions** and ecological services into decisions
- **Work in partnership** with organizations, landowners, different levels of government, First Nations, researchers, etc.

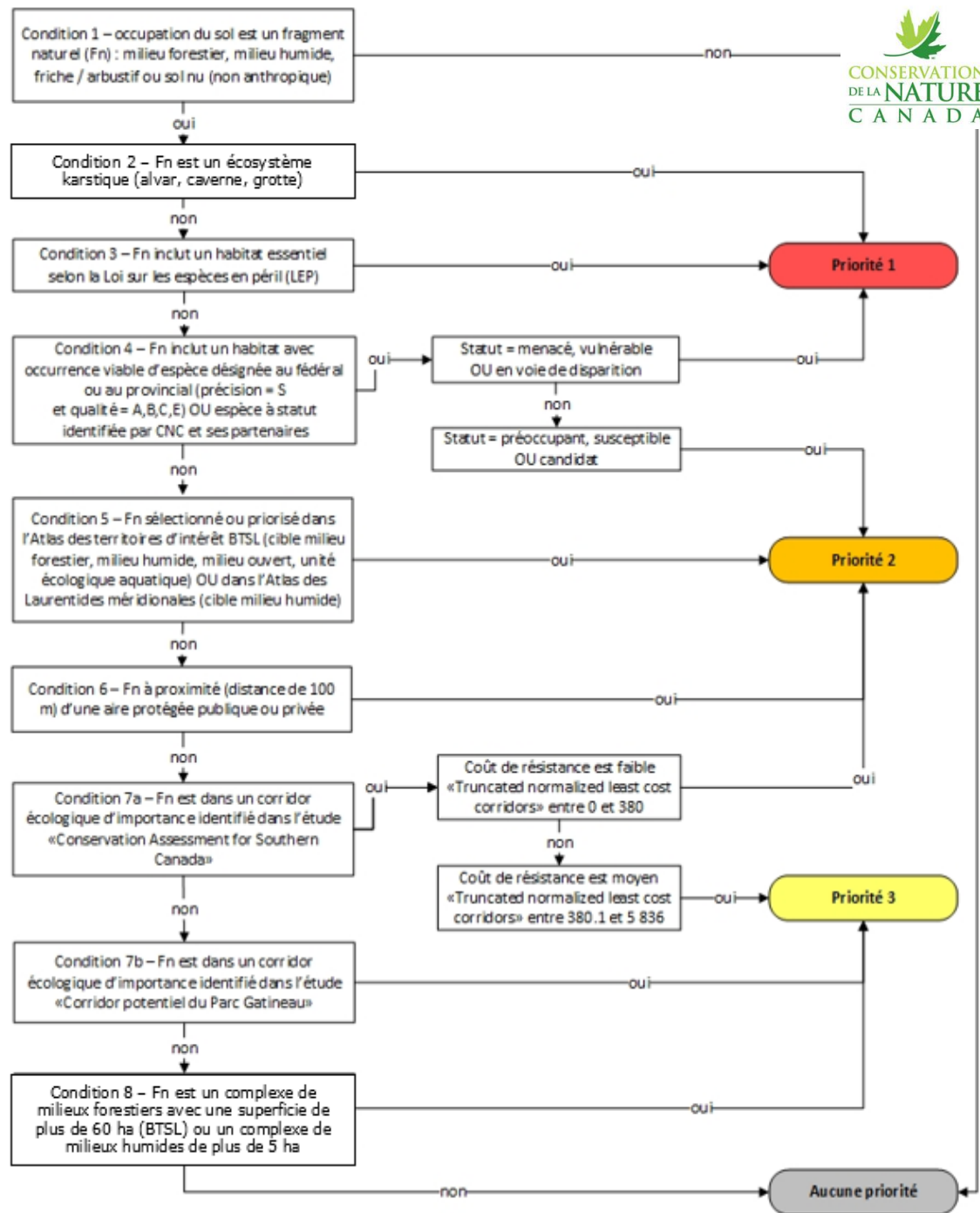
**ALONE
WE GO FAST
TOGETHER
WE GO FAR**



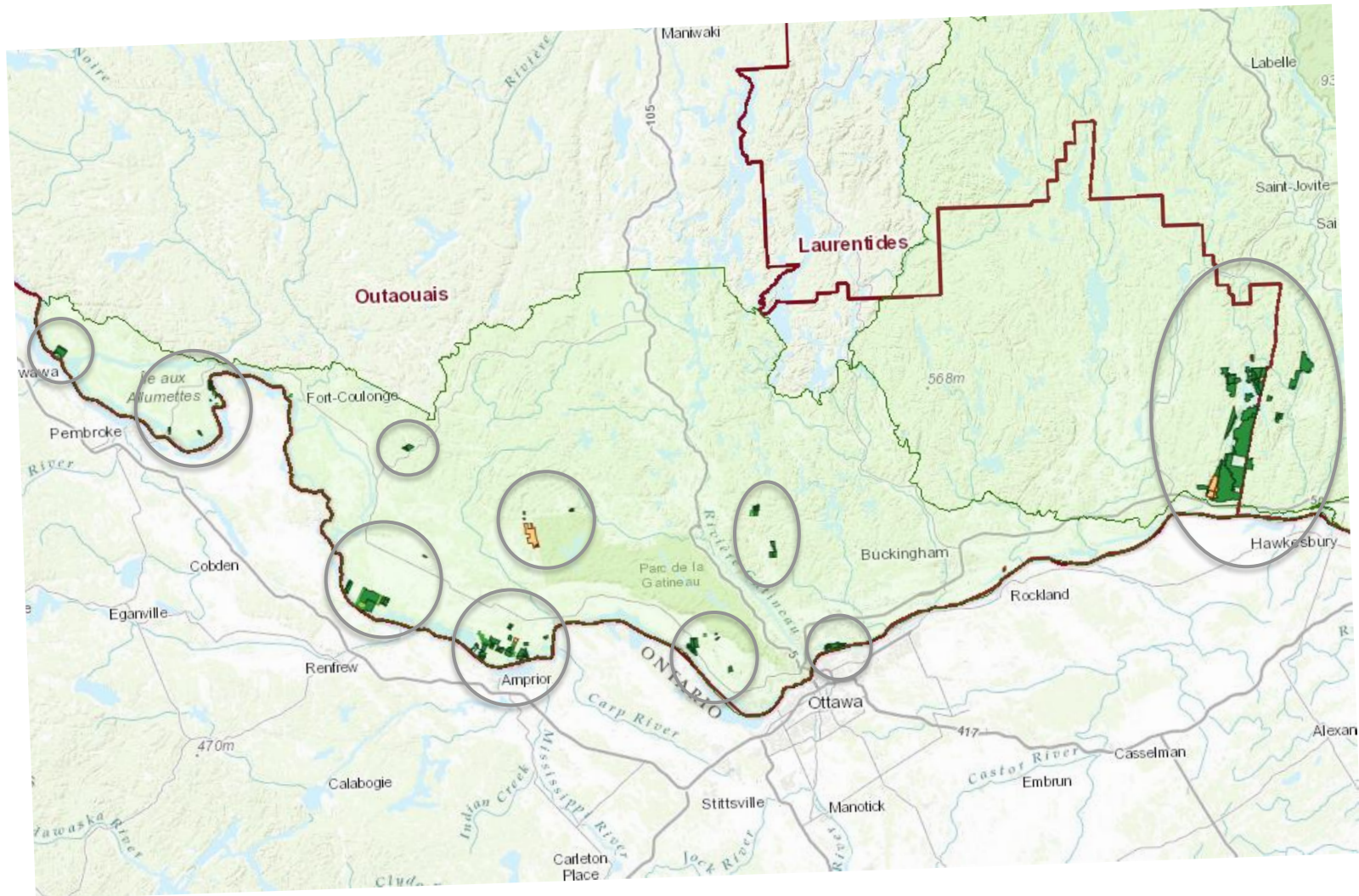
Science-based securement planning



- Spatial analysis covering 5,704 km² and 187,617 habitat fragments classified by land use
- Integration of multiple databases



Outaouais Region



Over 10 800 hectares are protected



WHAT ARE THE OPTIONS FOR YOU

Each securement
project is unique



Option 1

Land donation, sale and split receipt sale

Situation: you wish to dispose of the land, and it fits within NCC's priority framework

In all cases:

- There is a **transfer of title** (notarized deed)
- The value of the transaction cannot exceed the **fair market value**
- You have the satisfaction that the land is **protected in perpetuity**

Land donation: you receive a charitable receipt for the value of the land

Sale: you receive money for the sale of the land

Split receipt sale: you receive cash and a charitable receipt for the value of the land (the discount must be 20% or more of the value of the land)

* The charitable receipt can be used for a period of 5 years

** The owner must have indicated his intention to donate



Option 2

Ecogift or split receipt sale with Ecogift

Situation: you wish to dispose of the land, and it fits within NCC's priority framework

In all cases:

- There is a **transfer of title** (notarized deed)
- The transaction is based on the **fair market value** of the property
- You have the satisfaction that the land is **protected in perpetuity**

This type of transaction is carried out through the **Ecological Gifts Program of Environment and Climate Change Canada**. The land must be certified as "ecologically sensitive".

Benefits

- The Government of Canada certifies the donation
- The charitable receipt can be used for a period of 10 years
- Capital gain is eliminated



Option 3

Cash donation and donation of shares

Situation: you wish to contribute to CNC's mission and receive a charitable receipt

Stewardship Fund: is required to invest 20% of the fair market value of each property in a fund to cover stewardship costs (e.g. municipal and school taxes).

Benefits

- Charitable receipt for the value of the donation
- Recognition as a donor





Option 4 Bequest

Situation: you wish to leave a legacy for future generations at the time of your passing

Possibility of **donation your property** or plan **the donation of some financial assets**.

In both cases, this type of donation is planned in partnership with CNC.



Option 5

Nature Reserve on Private Land

Situation: you want to retain ownership of your land and protect it for the long term

This legal status is obtained through the **ministère de l'Environnement, de la Lutte contre les changements climatiques, de la Faune et des Parcs**. The land must meet a list of eligibility criteria.

To find out more:

<https://www.environnement.gouv.qc.ca/biodiversite/prive/depliant.htm>

Benefits

- Minimum term of 25 years and up to perpetuity
- Property is included in the Protected Areas Registry under the Quebec Natural Heritage Conservation Act
- Agreement published in the land register follows the land and binds subsequent purchasers
- Possibility of reduced property taxes



Option 6

Moral agreement for voluntary conservation

Situation: you wish to retain ownership of your land and protect it to the best of your ability

You sign a declaration of intent based on a **moral commitment** to protect your property. You do your best to maintain good conservation practices based on the advice offered.

Benefits

- No legal commitment on your part
- Learning about good conservation practices
- Relationship with a conservation organization





NCC PROTECTED LANDSCAPES OF THE OUTAOUAIS





© CNC

SHEENBORO AREA (200 hectares)





© Combetek

REID & FITZPATRICK ISLAND, L'ISLE AUX ALLUMETTES (135 hectares)





© CNC

LITCHFIELD NATURE RESERVE (111 hectares)





© CNC

ARMSTRONG LAKE, CLARENDON (1210 hectares)





© Mike Dembeck

BRISTOL MARSHES (1180 hectares)





© CNC

NORTH CORRIDOR – WESTERN LIMIT OF THE GATINEAU PARK (500 hectares)





© Claude Duchesne

BRECKENRIDGE NATURE RESERVE (300 hectares)





© CNC

ALVAR-D'AYLMER NATURE RESERVE (43 hectares)





© Mike Dembeck

KETTLE ISLAND NATURE RESERVE (190 hectares)





© Kenauk Nature

KENAUK PROPERTY (7600 hectares **Outaouais et Laurentides*)



A circular inset image showing a turtle with a dark shell and orange-brown head and neck, walking on a gravel path. The background is a blurred green landscape.

TO KNOW MORE **ABOUT OUR WORK**

www.natureconservancy.ca

www.carapace.ca

<https://youtu.be/86XkW3Zs0VE>



Merci!



Caroline Gagné

*Directrice de programme – Ouest du Québec, Québec
1 877 876-5444 poste 6280*

caroline.gagne@conservationdelanature.ca